

Biosafety Cabinet Class II B2



Biosafety Cabinet Class II B2 is an equipment designed to provide a safe working environment for handling biological materials, such as microorganisms, viruses, and other potentially infectious agents

Airflow Pattern :

- **Total Exhaust 100% exhaust system**, where all air is exhausted through HEPA filters to the outside environment, minimizing the risk of recirculating potentially contaminated air.

Applications :

- **Handling Hazardous Agents** : These are substances that require a high level of containment, including certain pathogens and toxic chemicals.
- **Pharmaceutical and Biotechnology Research** : This involves research and development activities that necessitate strict containment and safety measures.
- **Clinical and Research Laboratories** : These facilities handle materials that pose significant risks to personnel and the environment.

Benefits :

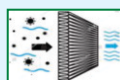
- **Enhanced Safety** : Provides a high level of protection for both the operator and the environment by ensuring that all potentially contaminated air is exhausted.
- **Compliance** : Helps laboratories comply with stringent biosafety regulations and guidelines for handling hazardous materials.
- **Versatility** : Suitable for a wide range of applications requiring strict containment and safety measures.



Product Description			
Model	Nominal Width	Inner Chamber (WxDxH) mm	Outer Chamber (WxDxH) mm
AS-BSC-B2-4MS 4SS	4 Ft.	1120 x 640 x 640 mm	1260 x 800 x 2200 mm
AS-BSC-B2-6MS 6SS	6 Ft.	1740 x 650 x 640 mm	1860 x 800 x 2200 mm
Customize size on request			



Total Exhaust System
No Air Recirculation



HEPA Filter
Dual HEPA Filtration for Inflow and Exhaust



Stainless Steel Interior
Easy to clean, Corrosion resistant



UV Germicidal Lamp
Optional for added sterilization



Microprocessor Control Panel
Intuitive and Programmable



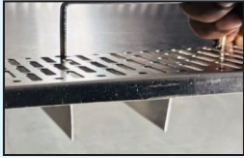
Low Noise, High Efficiency
Quiet operation with powerful blower

Biosafety Cabinet Class II B2



Ettore Darvi

Ergonomic Design



Partitioned Workbench

Easy to lift and clean which can be directly placed into the autoclave.



Raised Arm Rest

Ensure a comfortable working posture while preventing accidental blocking of the front air grill.



Drop down Glass Door

Drop down glass door is easy to clean.



Gas Valve Nozzle

High quality stainless steel valve with a yellow safety cap, ideal for precise gas control.



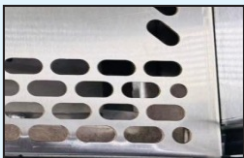
Power Socket with MCB

Universal socket with built in Mini Circuit Breaker ensures safe and reliable power supply with overload protection.



10° Inclination Design of Cabinet Body

The front operation interface has an ergonomic design of 10° inclination to ensure more comfortable operation.



Debris Grid

The debris grid traps paper scraps and other materials, protecting the negative pressure zone from airflow disruption or damage.



Lockable Caster Wheel

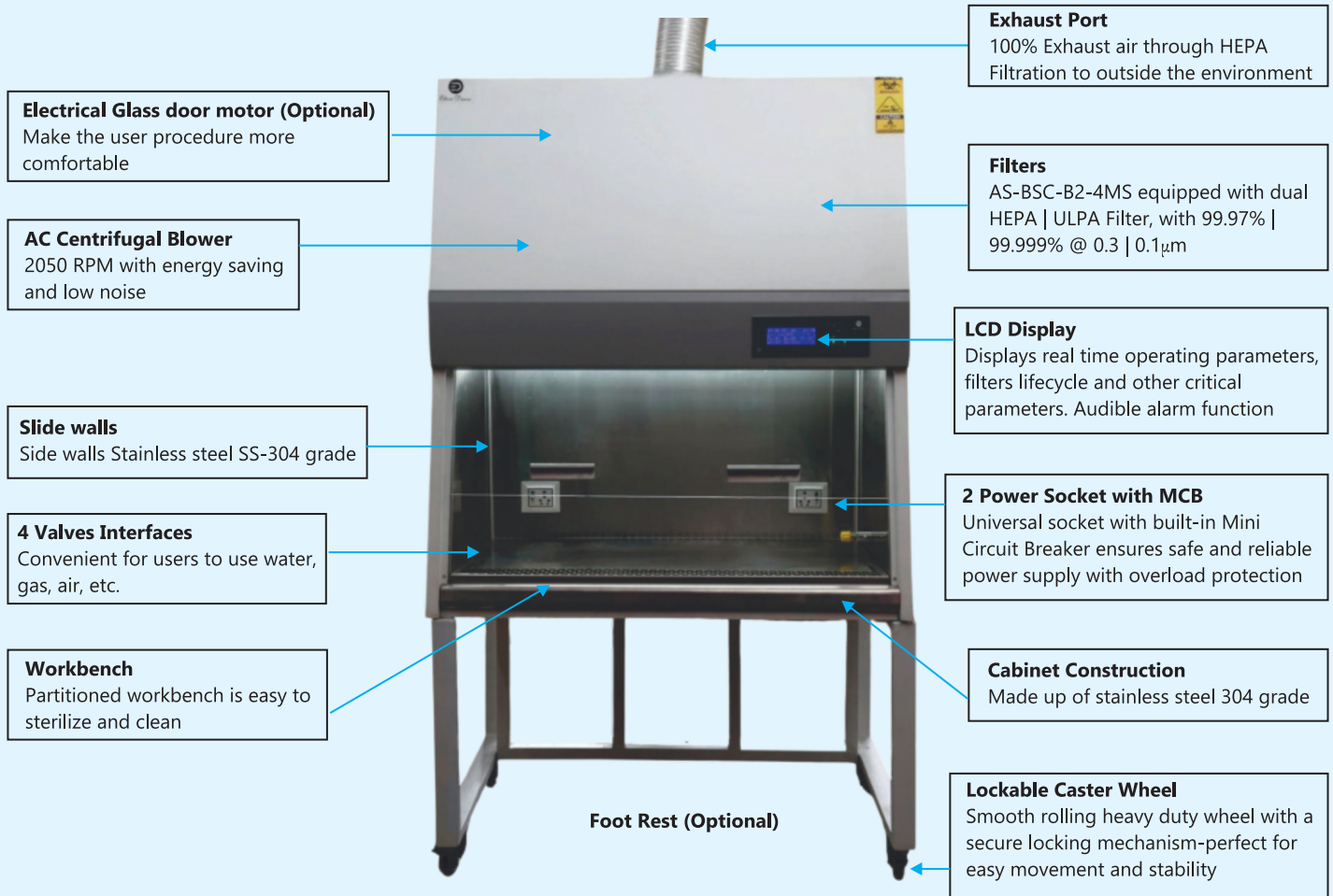
Smooth rolling heavy duty wheel with a secure locking mechanism-perfect for easy movement and stability.

Biosafety Cabinet Class II B2



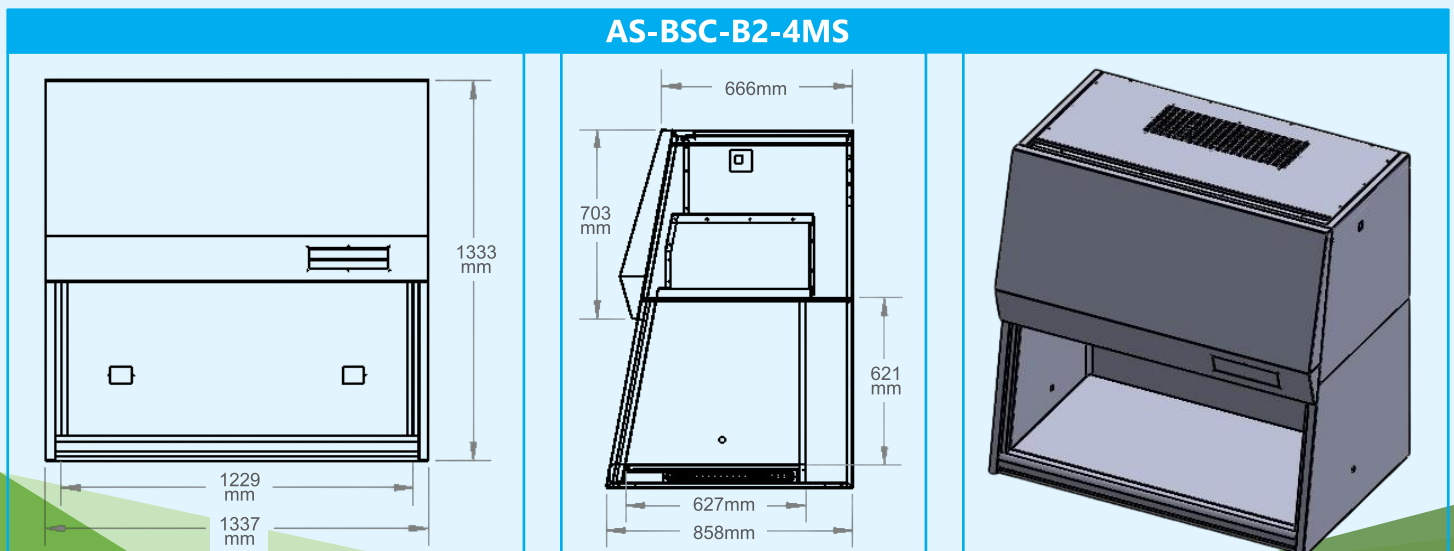
Ettore Darvi

Product Parts



Product Dimension (in mm)

AS-BSC-B2-4MS



Biosafety Cabinet Class II B2



Technical Specification of Biosafety Cabinet Class II B2			
Model		AS-BSC-B2-4MS 4SS	AS-BSC-B2-6MS 6SS
Working Voltage (V/Hz)		220-230V/50HZ	
Power of Blower (W)		300W	
Air Circulation		100% Exhaust	
Main Filter Efficiency		HEPA Filter 99.97 efficiency 0.3 micron	HEPA Filter 99.97 efficiency 0.3 micron
Exhaust Filter Efficiency		HEPA Filter 99.97 efficiency 0.3 micron	HEPA Filter 99.97 efficiency 0.3 micron
Sound Level (dB)		68.4dB	66dB
Downflow Velocity (m/s, fpm)		0.35m/s; 70FPM	
Inflow Velocity (m/s, fpm)		0.45m/s;90FPM	
Fluorescent Lamp Intensity (Lux)		1200	
Net/ Gross Weight	kg	230/260	295/320
	lbs	518.08/573.20	639.34/705.47
Internal Dimensions (W*D*H)	mm	1120*640*640	1740*650*640
	In	44.09*25.19*25.19	68.5*25.59*25.19
External Dimensions (W*D*H)	mm	1260*800*2200	1860*800*2200
	In	49.60*31.49*86.61	73.22*31.49*86.61
Supporter		680mm	
Alarm		Sound	
Certifications		CE Certified , ISO9001:2015, ISO14644-1:2015, ISO13485:2016, IEC61010-1 & EN12469 Certified	
Optional		Touchscreen Display ULPA Filter Pressure Gauge Valve	



Ettore Darvi Pvt. Ltd.
314, FIE Patparganj Industrial Area,
New Delhi-110092
E : sales@ettoredarvi.com
W : www.ettoredarvi.com