

# Vertical Laminar Air Flow Cabinet



Ettore Darvi

The **Vertical Laminar Air Flow Cabinet** is a contamination-free workspace solution designed to protect samples from airborne particulate by providing a constant vertical flow of filtered air across the work surface.

## Airflow Pattern :

Air enters from the top of the cabinet and flows downwards in a unidirectional, parallel stream towards the work surface

## Applications :

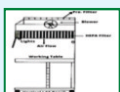
- **Tissue Culture Labs** : Prevent contamination in cell culture work.
- **Electronics Assembly** : Clean handling of sensitive microelectronic parts.
- **Pharmaceutical Compounding** : Safe preparation of non hazardous drugs and sterile solutions.
- **Food Testing & Quality Control** : Contaminant-free workspace for food microbiology.



## Benefits:

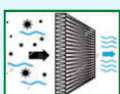
- **Product Protection:** Prevents contamination of samples and products.
- **User-Friendly Operation:** Easy to operate with ergonomic design and low maintenance.
- **Energy Efficient:** Low power consumption with an efficient airflow system.

| Product Description                   |               |                          |                                     |
|---------------------------------------|---------------|--------------------------|-------------------------------------|
| Model                                 | Nominal Width | Inner Chamber (WxDxH) mm | Outer Chamber (WxDxH with Stand) mm |
| AS-VLAF-2MS   2SS                     | 2 Ft.         | 605 x 600 x 600 mm       | 715 x 830 x 2000 mm                 |
| AS-VLAF-3MS   3SS                     | 3 Ft.         | 910 x 600 x 600 mm       | 1020 x 830 x 2000 mm                |
| AS-VLAF-4MS   4SS                     | 4 Ft.         | 1220 x 600 x 605 mm      | 1335 x 850 x 2000 mm                |
| AS-VLAF-6MS   6SS                     | 6 Ft.         | 1820 x 600 x 605 mm      | 1930 x 830 x 2000 mm                |
| Customized sizes available on request |               |                          |                                     |



### Vertical Laminar

Provides uniform downward airflow to protect samples from contamination.



### HEPA | ULPA Filter

High-efficiency | Ultra low particulate air filter (99.97% @ 0.3µm | 99.999% @ 0.12µm) ensures ISO Class 5 cleanliness.



### LED Lighting

Shadow-free, energy-efficient illumination (LUX > 1000) for clear visibility.



### UV Germicidal Lamp

Sterilizes the work area before and after operations



### Microprocessor Control Panel

User-friendly control with programmable settings



### Low Noise, High Efficiency

Quiet operation with high-performance blower system

# Vertical Laminar Air Flow Cabinet



*Ettore Darvi*

## Ergonomic Design



### **Partitioned Workbench**

Easy to lift and clean which can be directly placed into the autoclave.



### **Workbench**

Smooth workbench for contamination-free laminar air flow SS-304 Grade



### **Drop down Glass Door**

Drop down glass door is easy to clean.



### **Gas Valve Nozzle**

High quality stainless steel valve with a yellow safety cap, ideal for precise gas control.



### **Power Socket with MCB**

Universal socket with built in Mini Circuit Breaker ensures safe and reliable power supply with overload protection.



### **10° Inclination Design of Cabinet Body**

The front operation interface has an ergonomic design of 10° inclination to ensure more comfortable operation.



### **Seamless Corner**

Seamless corners ensure zero contamination & built for ultimate sterile performance



### **Lockable Caster Wheel**

Smooth rolling heavy duty wheel with a secure locking mechanism-perfect for easy movement and stability.

# Vertical Laminar Air Flow Cabinet



Ettore Darvi

## PRODUCT PARTS

### Electrical Glass door motor (Optional)

Make the user procedure more comfortable

### AC Centrifugal Blower

2050 RPM with energy saving and low noise

### Slide walls

Side walls Stainless steel SS-304 grade

### 2 Power Socket with MCB

Universal socket with built-in Mini Circuit Breaker ensures safe and reliable power supply

### Workbench

Partitioned workbench is easy to sterilize and clean

### Filters

AS-VLAF-3MS equipped with single HEPA | ULPA Filter, with 99.97% / 99.999% @ 0.3 $\mu$ m | 0.1 $\mu$ m and Single Pre-filter

### Outer Body

Outer body with MS Epoxy Powder Coated

### LCD Display

Displays real time operating parameters, filters lifecycle and other critical parameters. Audible alarm function

### 4 Valves Interfaces

Convenient for users to use water, gas, air, etc.

### Cabinet Construction

Made up of stainless steel 304 grade

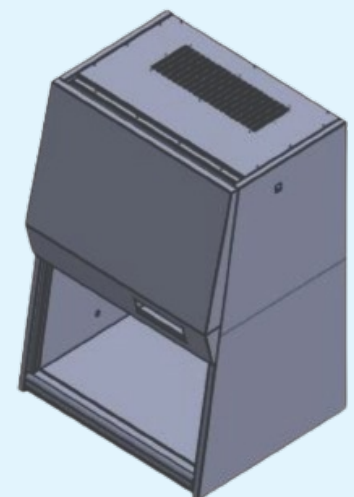
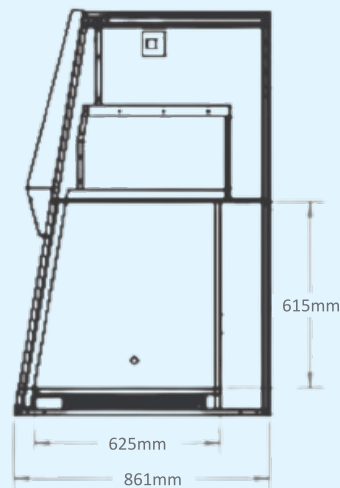
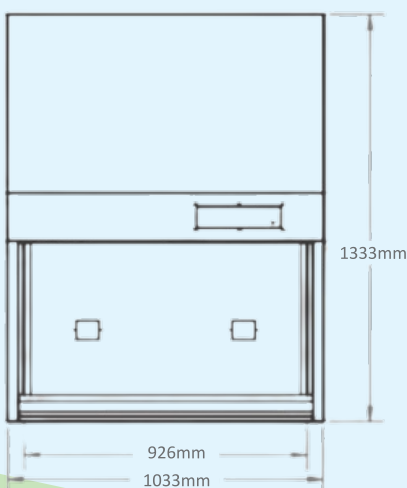
### Lockable Caster Wheel

Smooth rolling heavy duty wheel with a secure locking mechanism-perfect for easy movement and stability

Foot Rest (Optional)

## PRODUCT DIMENSIONS (in mm)

### AS-VLAF-3MS



# Vertical Laminar Air Flow Cabinet



Ettore Darvi

## TECHNICAL SPECIFICATIONS

|                      |  |  |
|----------------------|--|--|
| Airflow              | Airflow Type   | Vertical   |
|                      | Air Velocity   | 0.30m/s-0.60m/s  |
| Cabinet Construction | Blower   | Single phase, 2050rpm, centrifugal impeller, low noise & low vibration |
|                      | Work zone  | SS304 Stainless Steel  |
|                      | Main Body  | MS Powder Coated   SS-304  |
|                      | Sash Glass Thickness                                       | 5mm  |
|                      | Sash Glass Type  | Tempered Glass   Tuffen Glass  |
|                      | Sash Working Opening                                       | 8"/20cm  |
|                      | Sash Maximum Opening                                       | 12"/30cm   |
|                      | Full access to Glass Cleaning                              | Yes  |
|                      | Illumination(Lx)   | ≥ 1000LX   |
|                      | Noise  | ≤ 65db   |
| Cleanliness          | Cleanliness  | class 100  |
|                      | Pre-Filter Efficiency                                      | 90% efficiency for particles > 10µm                                    |
|                      | Filtration Efficiency                                      | 0.3µmparticle ≥ 99.97%   |
| Controlling System   | Display  | LCD Display  |
|                      | Air Velocity Display                                       | Yes  |
|                      | Blower Switch  | Yes  |
|                      | Brightness Lamp Switch                                     | Yes  |
|                      | UV Lamp & Timer  | Yes  |
| Stand                | Foldable stand   | Stainless steel SS304 Grade  |
| Certificate          | EN12469, ISO14644, ISO9001, ISO13485, CE, GMP, IEC61010    | Yes, Certified   |
| Power Supply         | AC220V, 1φ 50Hz  | Yes  |
| Weight               | Net Weight   | 235kg  |
|                      | Gross Weight   | 260kg  |
| Alarm                | Alarm type   | Sound+Indication   |
|                      | Sash height high/low                                       | Yes  |
|                      | Filter blocked   | Indication   |
|                      | Filter Lifetime  | Yes  |
|                      | Air Velocity high/low                                      | Indication   |
| Optional Features    | Touchscreen Display   Pressure Gauge   Valve   ULPA Filter |  |



**Ettore Darvi Pvt.Ltd.**

314, FIE Patparganj Industrial Area,  
New Delhi-110092

E : [sales@ettoredarvi.com](mailto:sales@ettoredarvi.com)

W : [www.ettoredarvi.com](http://www.ettoredarvi.com)

26-07-2025